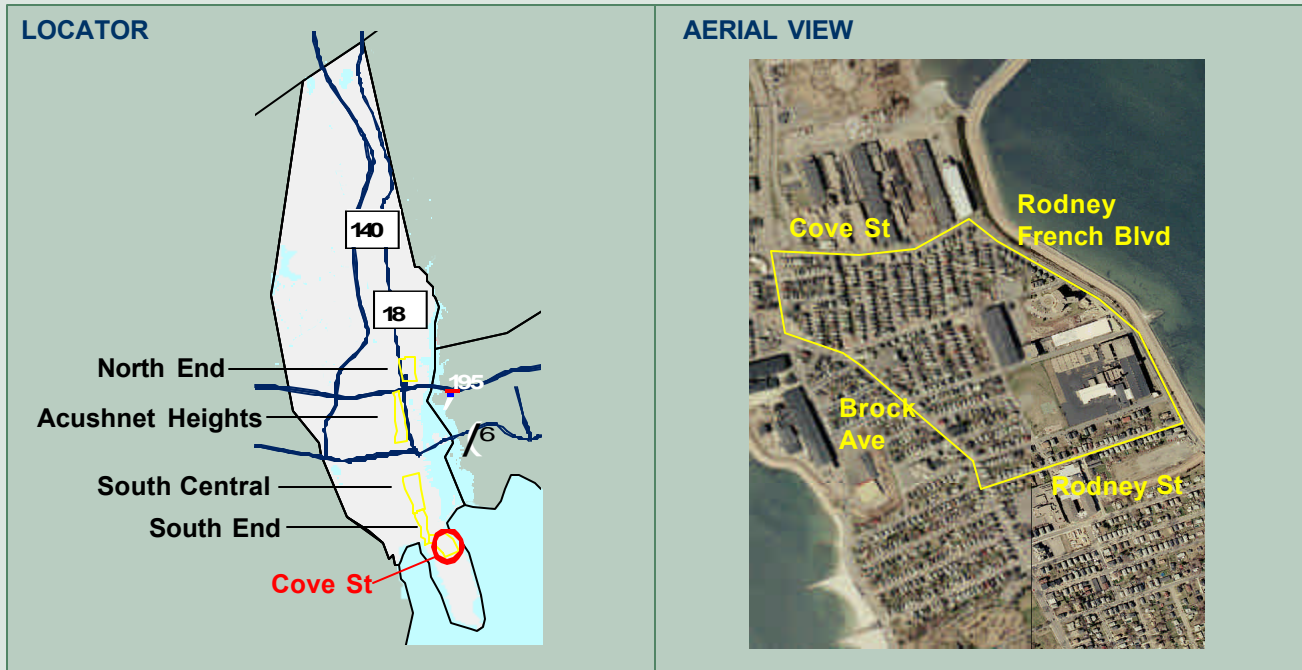


COVE STREET

Target Area Profile



DESCRIPTION

The Cove Street Target Area is defined by Cove Street to the north, Rodney Street to the south, Brock Avenue to the west and Rodney French Boulevard to the east. Cove Street is a densely populated residential community with a number of severely distressed buildings. Revitalization tasks for the area include improving parks and open space and rehabilitating deteriorated housing.

Population Change, 1990 - 2000

Neighborhood	1990	2000	%Change
City of New Bedford	99,922	93,768	-6%
Cove Street	3,509	3,119	-11%

Population Distribution by Age, 2000

Age	Number	Percent
Under 18	896	29%
18 to 34	918	29%
35 to 64	884	28%
65 and Over	421	13%

Population Distribution by Race/Ethnicity, 2000

Race/Ethnicity	Number	Percent
White	2,052	66%
Black	132	4%
Latino	532	17%
Other	403	13%

Median Household and Per Capita Income, 1999

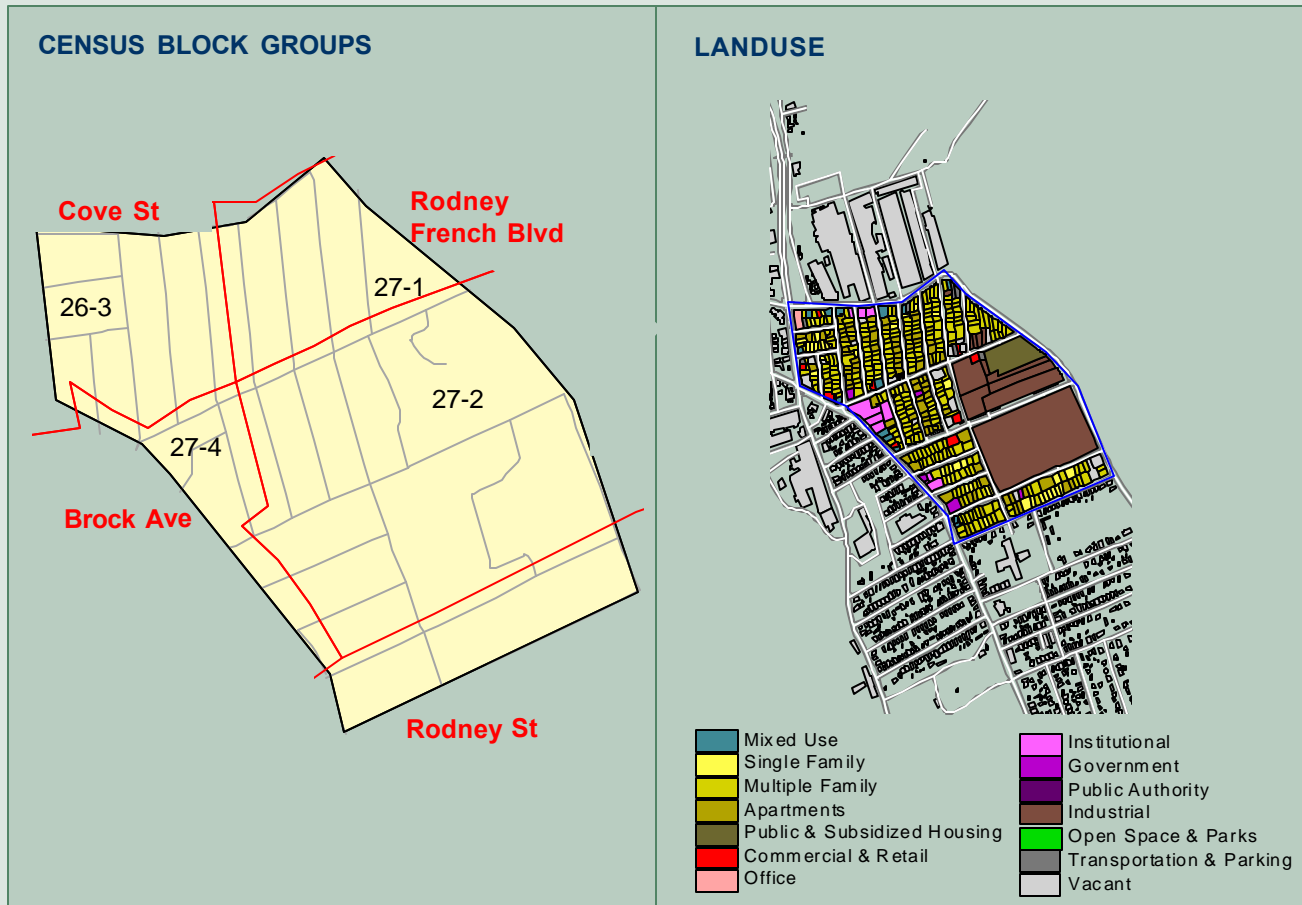
Tract-Block Group	Median Household	Per Capita
26-3	17,188	10,366
27-1	23,750	9,491
27-2	9,726	11,669
27-4	25,000	12,972

Persons in Very Low, Low and Low to Moderate Income Groups, 1999

Tract-Block Group	Very Low	Low	Low/Mod	%Very Low	%Low	%Low/Mod
26-3	498	748	943	42%	63%	80%
27-1	397	632	725	41%	65%	75%
27-2	480	703	813	49%	72%	83%
27-4	247	313	482	36%	46%	71%

COVE STREET

Target Area Profile



Housing Units: Year Structure Built

Built	26-3	27-1	27-2	27-4
1999 to March 2000	0	0	0	0
1995 to 1998	5	0	6	0
1990 to 1994	0	0	0	0
1980 to 1989	0	0	0	0
1970 to 1979	13	0	133	7
1960 to 1969	82	43	60	18
1950 to 1959	64	32	72	25
1940 to 1949	36	75	37	50
1939 or earlier	355	271	266	227
Total	555	421	574	327
%pre-1940	64%	64%	46%	69%

Housing Units: Vacancy and Tenure, 2000

Status	Cove Street		New Bedford	
	Units	Percent	Units	Percent
Housing Units	1,538	100%	41,511	100%
Vacant	240	16%	3,333	8%
Occupied	1,298	84%	38,178	92%
Owner-Occupied	244	19%	16,711	44%
Renter-Occupied	1,054	81%	21,467	56%