

REFURBISH EXISTING HATCH WITH FLOOD-PROOFING GASKET & HARDWARE. (PENDING)

REPLACE DOOR WITH NEW STAINLESS STEEL FLOOD-PROOF DOOR. (PENDING)

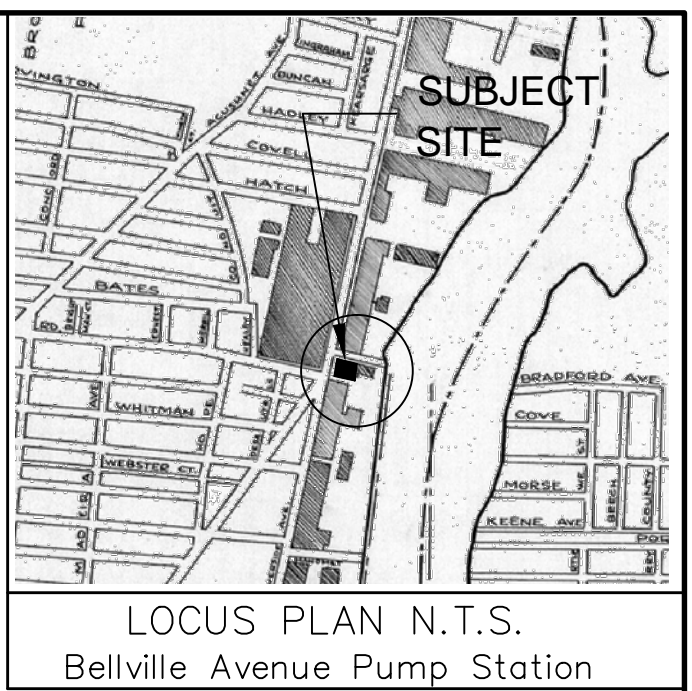
REFURBISH HOSE BIBB WITH FLOOD-PROOF GASKET AS NEEDED. (PENDING)

MAXIMUM FLOOD ELEVATION 17.73 W/ 4 FT SEA LEVEL RISE

REMOVE DOOR AND HARDWARE & REPLACE WITH REINFORCED BLOCK AND BRICK MASONRY. (PENDING)

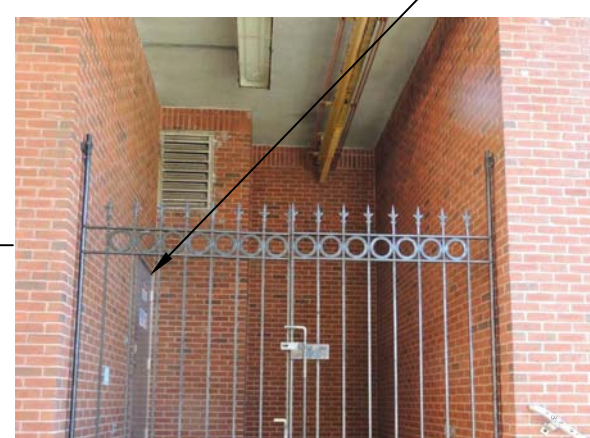
REFURBISH DOOR AND FLOOD-PROOF WITH NEW FRAME AND HARDWARE. (PENDING)

INSTALL STOP LOG CHANNELS EACH SIDE OF OPENING TO ELEVATION 18.00 AND PROVIDE STOP LOGS ON SITE. (PENDING)



LOCUS PLAN N.T.S. Bellville Avenue Pump Station

REPLACE DOOR WITH NEW STAINLESS STEEL FLOOD-PROOF DOOR. (PENDING)

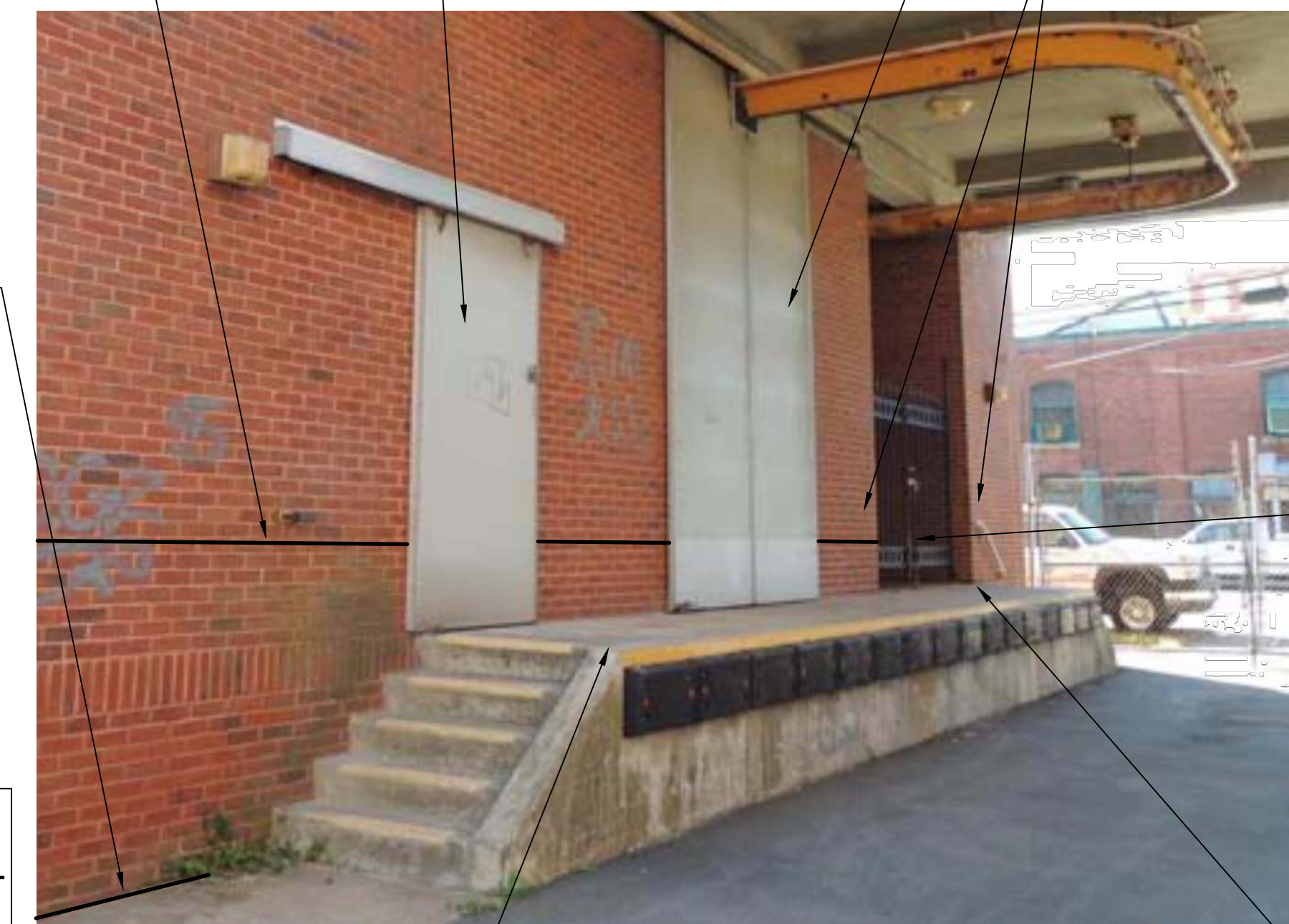


WEST ELEVATION

FLOOD ELEVATION 13.07 W/ 2 FT SEA LEVEL RISE

INSTALL STOP LOG CHANNELS TO ELEVATION 18.00 PROVIDE STOP LOGS ON SITE. (PENDING)

BENCHMARK ON CONCRETE LANDING AT SW CORNER CHISEL BOX MARK ELEVATION 16.13



NORTH ELEVATION

BENCHMARK ON CONCRETE DOCK AT NE CORNER CHISEL BOX MARK ELEVATION 16.12

BENCHMARK ON CONCRETE DOCK NEAR BLDG CORNER CHISELED SQUARE ELEVATION 16.18

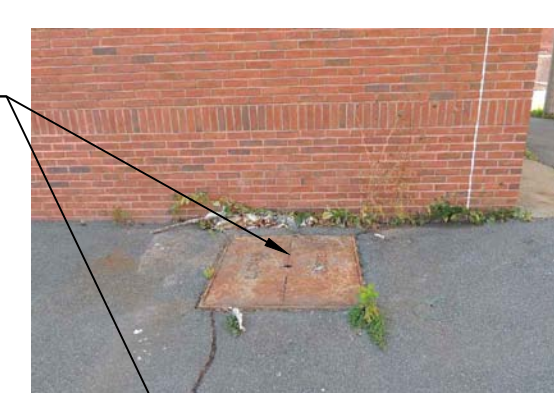
STORY POLE MOUNTED TO BUILDING WALL. (PENDING)

BENCHMARK ON CONCRETE WALK AT NW BUILDING CORNER CHISEL BOX MARK ELEVATION 13.295

INSTALL STOP LOG CHANNELS TO AT LEAST ELEVATION 17.80 PROVIDE STOP LOGS ON SITE. (PENDING)

REPLACE DOOR WITH NEW STAINLESS STEEL FLOOD-PROOF DOOR. (PENDING)

REFURBISH EXISTING HATCH WITH FLOOD-PROOFING GASKET & HARDWARE. (PENDING)



GENERAL NOTES FOR AS-BUILT:

- FLOOD PROTECTION ELEVATIONS*:
 - Inundation w/ 0' Sea Level Rise ELEVATION 0.00
 - Inundation w/ 1' Sea Level Rise ELEVATION 0.00
 - Inundation w/ 2' Sea Level Rise ELEVATION 13.07
 - Inundation w/ 4' Sea Level Rise ELEVATION 17.73

FLOOD PROTECTION LEVEL:

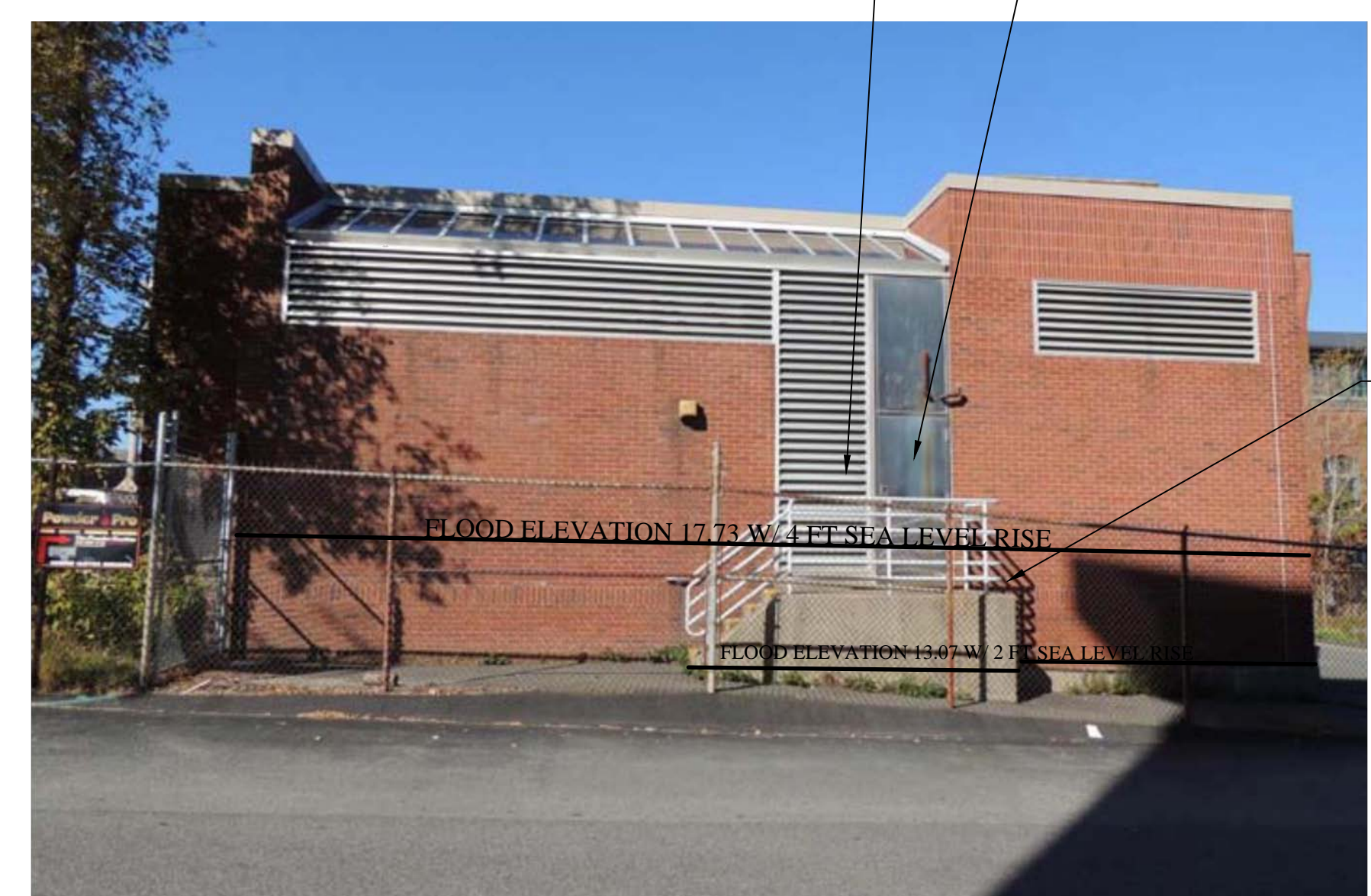
- THE ESTIMATED STANDING WATER FLOOD PROTECTION LEVEL ASSOCIATED WITH THE WORK COMPLETED TO DATE FOR THE PUMP STATION DRY WELL FACILITY IS TO JUST BELOW THE MAIN FLOOR SLAB AT APPROXIMATELY ELEVATION 16.15.
- THE ESTIMATED STANDING WATER FLOOD PROTECTION LEVEL ASSOCIATED WITH THE WORK COMPLETED TO DATE FOR THE PUMP STATION WET WELL FACILITY IS UNCHANGED NOTING THAT THAT THE WET WELL IS DIRECTLY CONNECTED TO THE COLLECTION SYSTEM WHICH IS SUBJECT TO FLOODING.

AS-BUILT
OCTOBER 3, 2016

NO.	DATE	DESCRIPTION	BY
1	10/3/16	CONVERT DRAWING TO AS-BUILT	DJF

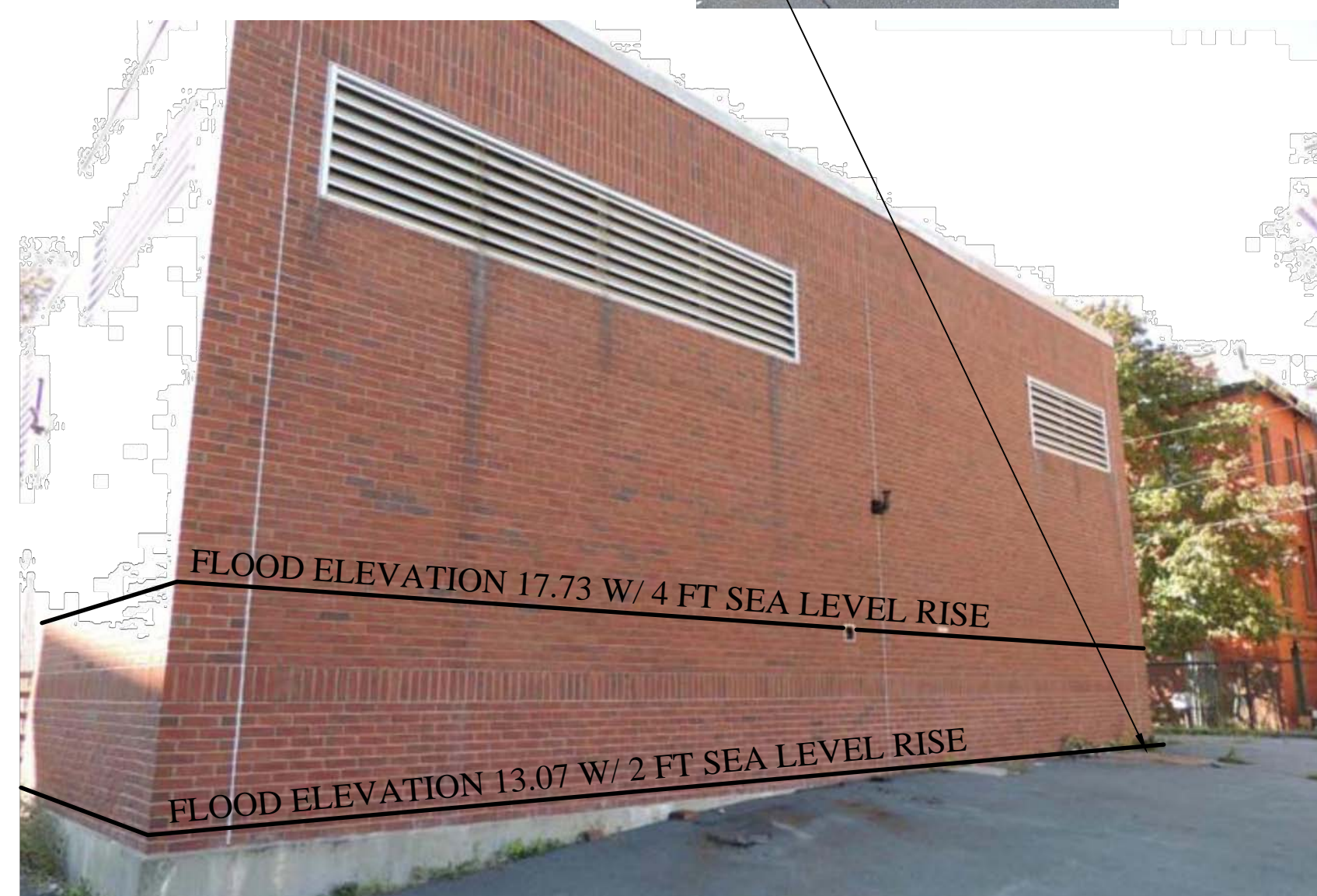
CITY OF NEW BEDFORD
DEPARTMENT OF PUBLIC INFRASTRUCTURE
Bellville Avenue Pump Station Map 111 Lot 99
618 Bellville Avenue, New Bedford MA 02745

DESIGNED BY : DJF
CHECKED BY :
SCALE: NTS
DATE : April 8_16
SHEET 8



SOUTH ELEVATION

BENCHMARK ON CONCRETE LANDING AT SE CORNER CHISEL BOX MARK ELEVATION 16.09



EAST ELEVATION